

# Stalker's versatile VMS presents the right message at the right time.

**NEW**  
from  
**STALKER**

Stalker's VMS trailers are powered by Precision Solar Controls and deliver pre-programmed and customizable messages in addition to monitoring vehicle speeds.

■ 300+ MEMORIZED, CUSTOMIZED, USER-PROGRAMMABLE MESSAGES

Controlled by a dedicated on-board computer

■ 12" / 18" AMBER LED CHARACTERS

Legible at up to 1000 ft.

■ RUGGED TRAILER PLATFORM

■ 4D DEEP-CYCLE 12-VOLT BATTERIES

Provide up to 24 days of continuous operation yielding longer operation time between battery charges.

■ FULL-SIZE ONBOARD KEYBOARD

**OPTIONAL:**

■ SOLAR PANELS

Recharge a day's worth of battery use with only 4 hours of sunlight allowing for "infinite" field operation.



■ STALKER KA-BAND DOPPLER RADAR

Pure Stalker - Accurate and durable with greater range, sensitivity, and tracking.

■ INTEGRATED STATISTICAL PACKAGE



**STALKER**<sup>®</sup> Radar | Lidar

The World Leader in Speed Measurement

1-800-STALKER

StalkerRadar.com

## Full Matrix, Pulse Width Modulation

At the heart of the Stalker VMS is Precision Solar Control's Full Matrix, Pulse Width Modulation LED Design. The Full Matrix LED Design treats all of the pixels in the display as a continuous image. This allows the pixels to be controlled individually to create various sizes of alphanumeric characters and display graphic images.

LED Pulse Width Modulation significantly increases the time between battery charges and powers the LEDs so that they remain at a consistent brightness despite the normal voltage drop during the batteries' discharge cycle.

**Message Library** of 60 standard messages with a 350 message capacity on 365-day calendar controlled by a dedicated on-board computer. A full-size, onboard keyboard expedites setup and message modification in the field.



**On-board dedicated computer** provides NTCIP compliant programming on 365-day calendar for ease of use and maximum customizability.

**4' x 8' display** (44" x 84" viewing area) ensures legibility at up to 1000 feet for greater motorist compliance and safety – 10-year average operational-life LEDs reduce maintenance time and expense.



**4D deep-cycle 12-volt batteries** provide up to 24 days of continuous operation yielding longer operational time between battery charges.

**Graffiti-resistant paint** keeps the trailer looking clean and neat for a professional department image, while its all steel construction provides a sturdy platform and reduces damage sustained in the field.

## 4 Stabilizing/Leveling Jacks

### Options:

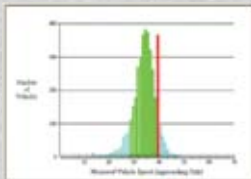
#### Top-mounted solar panel

recharges a day's worth of battery use with only 4 hours of sunlight allowing for "infinite" field operation.



#### Stalker Traffic Speed Sensor Ka-Band Doppler Radar

The speed measurement component is pure Stalker - accurate and durable. Stalker's Ka-Band radar has greater range, sensitivity, and tracking compared to competitive signs' K-Band radars.



**Integrated statistical package** gathers valuable traffic data for improved grant writing support and verification of the sign's impact on traffic speeds.

## Specifications:

### TRAILER

<b>Width</b>	96" (2.44m)
<b>Length</b>	121" (3.07m) tongue in travel position 79" (2.0m) tongue in display position
<b>Height</b>	(raised) - 143" (3.63m) (travel) - 105" (2.66m)
<b>Weight</b>	1360 lbs. (616.8kg)
<b>Tongue weight</b>	75 lbs. (34kg)
<b>Main Frame</b>	11 ga. formed steel channel
<b>Lift Mechanism</b>	Anti-reversing lift system

### SIGN DISPLAY

<b>Height</b>	48" (1.22m)
<b>Width</b>	96" (2.43m)
<b>Character Height</b>	12" (30cm) / 18" (46cm)
<b>Lamp</b>	30° amber LED
<b>Legibility</b>	up to 1000ft. (305m)
<b>Full Matrix Pixels</b>	25 rows / 48 columns
<b>Illumination</b>	Active LED
<b>Viewing Area</b>	44" x 84" (1.11m x 2.13m)

### ENERGY SOURCE

<b>Battery Bank</b>	(4) D Deep-Cycle Battery
<b>Autonomy</b>	24 days @ 78°F (25°C)
<b>Generator</b>	Solar Panel Array
<b>Recovery Rate</b>	4 hours of sun per 1 day power requirement

### RADAR - STALKER TRAFFIC SPEED SENSOR

<b>Detection Distance</b>	Up to ½ mile
<b>Beam Width</b>	12° Circular

## Accessories:

#### Spare Tire



Wheel Jack

#### Wheel Lock



#### Coupler Lock



Alarm



# STALKER® Radar | Lidar

The World Leader in Speed Measurement

applied concepts, inc.

2609 Technology Drive ■ Plano, Texas 75074  
972.398.3780 ■ Fax 972.398.3781



1-800-STALKER

StalkerRadar.com