

# STALKER

## DUAL SL

MOVING POLICE RADAR

Features Faster  
Speed Tracking  
and Same Lane  
Monitoring



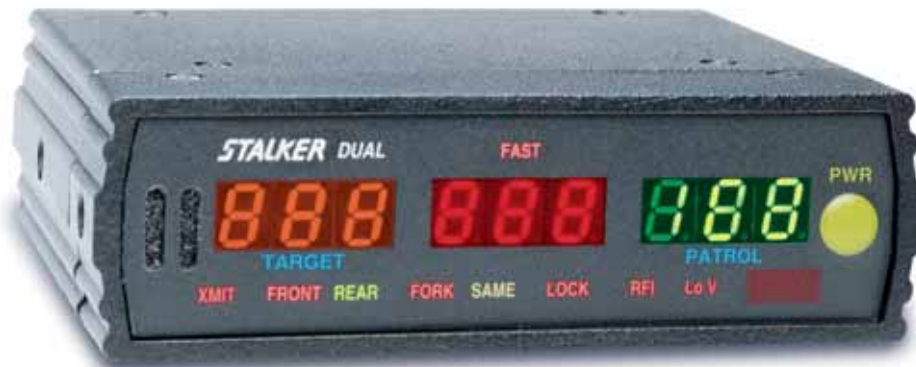
Sophisticated Ka Band Antenna

**Performance That Leads the Industry  
From the Industry's Leading Manufacturer**

### **Tracks Vehicles in All Four Directions!**

**Vehicles Coming Toward You from the Opposite Direction**  
**Vehicles Moving Away from You in the Opposite Direction**  
**Vehicles Coming from Behind You in the Same Direction**  
**Vehicles In Front of you going the Same Direction**

# STALKER DUAL SL



## The Most Range & Best Performance Available

The Stalker DUAL SL sets the standard in the industry for range and performance. The best performance means monitoring every vehicle at greater distances, which results in superior tracking history and better target identification. The Stalker DUAL's sophisticated Ka band antenna and the advanced DSP technology, enable it to outperform every other police radar on the market.

## Advanced Digital Signal Processing

Stalker Radar pioneered DSP technology in 1990 and the Stalker DUAL SL is a refinement in the application of this technology. The analog Doppler signal is converted into a digital data stream inside the antenna. This data stream is analyzed by the Stalker DUAL's processing computer. By using sophisticated target identification programs, the Stalker DUAL SL can pick out weak signals that other radars would miss.

## FEATURES

- Industry Leading Performance
- Same-Lane Tracking
- Intelligent Faster Speed Tracking
- Dual Antenna Capability
- 3-Window Multicolored LED Display
- Read-Thru Lock
- Cordless Infrared Remote
- True Audio Doppler
- Narrow Beam Width
- Waterproof Ka Band Antenna
- Detachable Display Unit
- Software Upgradeable

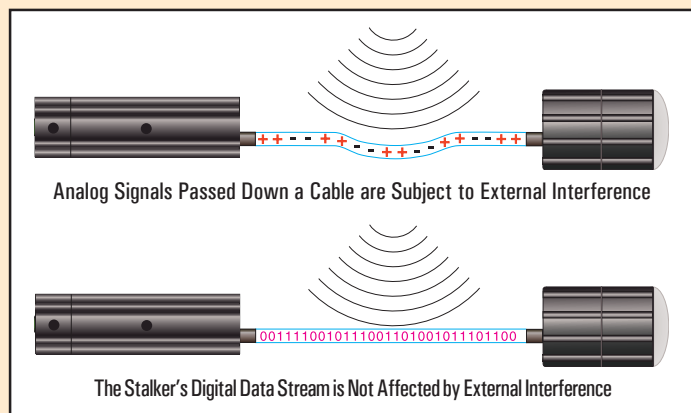
## The Most Sophisticated Ka Band Antenna

### Twin Balanced Mixers

The extremely sophisticated Ka band antennas use two mixer diodes (every other radar available uses just one diode). By averaging the Doppler signal from two diodes, the ending signal is much cleaner (less static or noise). The reduced signal noise increases sensitivity and allows the radar to achieve much longer range.

### Patented Digital Antenna Communication

The Stalker DUAL SL achieves longer range by digitizing the Doppler audio signal at the antenna and using a high-speed bi-direction communication link to transmit data between the antenna and the counting unit. Other two-piece radar units (even DSP radar units) send a low level Doppler audio signal from the antenna to the counting unit for processing and speed display. This method is susceptible to noise induced by the auto ignition and 2-way radio transmissions, which result in reduced range and increased potential for false signals.



### O-Ring Sealed Waterproof Design

The completely waterproof Ka band antenna features O-ring seals and connectors. The antenna can be exterior mounted with no reliability concerns.

### Narrow Beam Width

The narrow antenna beam-width of 12 degrees improves target discrimination.

### True Doppler Audio

The Stalker DUAL SL compensates for patrol speed variations when generating the Doppler audio. Since the audio tones do not vary with patrol speed, the operator learns to correlate this true Doppler audio with target speed, which eliminates the need to constantly watch the display to determine target speed.

### Ka Band Antenna



### Detachable Display Unit

The tiny display module can be easily separated from the counting unit using an optional cable. This allows for nearly limitless installation options.



### Software Upgradeable

Since the Stalker DUAL's operation is computer controlled, and the programming is stored on an EPROM chip, it can easily be upgraded in the future by simply exchanging the EPROM.

### Serial Port

The serial RS-232 port can interface with most video cameras, computers, remote readouts, printers, etc. The port interface eliminates the need to route additional cables to the display/counting unit.



## 3-Window Faster Speed Tracking

Stalker's patented Faster Speed Tracking assists the operator in making proper target identification by displaying both the Strongest and Faster targets simultaneously on separate display windows.



By displaying both strongest and faster targets simultaneously, the Stalker DUAL can monitor faster vehicles passing larger vehicles and display the speed of both targets simultaneously.

## Cordless Ergonomic Remote Control



### Easy to Operate

The Infrared cordless remote moves all controls into the palm of the operator's hand. After experiencing the convenience and ergonomic sensibility of the Stalker cordless remote, no operator will ever want to return to corded or faceplate controls.

### Omnidirectional

Omnidirectional infrared operation eliminates the need to carefully point the remote.

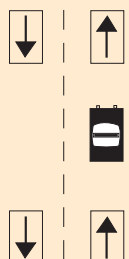
### Backlighted

Lighted keys make night time use a snap.

## Four-Direction Speed Monitoring

With two antennas, the Stalker DUAL SL's moving mode can track vehicles in four directions:

- In Front of the Patrol Moving the Same Direction
- In Front of the Patrol Approaching in the Opposite Direction
- Behind the Patrol Moving in the Same Direction
- Behind the Patrol Receding in the Opposite Direction



# STALKER

## DUAL SL

Sets the Industry Standard for Performance



### Industry Leading Service and Support

The Stalker DUAL SL is backed by the longest warranty and the most extensive support network in the business.

- The Longest Full Warranty in the Industry - 3-Year Full Warranty
- A Nationwide Network of Representatives to Assist You
- A Nationwide Network of Authorized Service Centers
- Lease-Purchase Plans with Low Monthly Payments
- 48-Hour Factory In-House Turnaround on Repairs.

### Made in the USA

The Stalker DUAL SL is covered by the following United States Patents: 5,563,603, 5,570,093, 5,525,996, 5,565,871, 5,528,245, 5,691,724  
In Addition, Other United States Patents are Pending.

## OPTIONS

### Switched Display Unit



Also Available in a Waterproof Version That's Ideal for Motorcycle Use.

### Motorcycle Remote



### Mini Remote



Controls All of the Main Functions.

### Stalker DUAL

The Stalker DUAL SL is Available Without Same Lane Capability. This Version is Sold as the "Stalker DUAL."

Toll Free 1-800-782-5537  
**1-800-STALKER**

[www.stalkerradar.com](http://www.stalkerradar.com)  
Email: [sales@stalkerradar.com](mailto:sales@stalkerradar.com)

applied concepts, inc.

2609 Technology Drive  
Plano, TX 75074-7467  
(972) 398-3780  
(972) 398-3781 Fax